



# Installation Instructions

“Bolt-together” Heavy Duty Perimeter Kit Design

\*\*\*\*\*

Our Heavy Duty Perimeter Kits are manufactured with a “Bolt-together” design, making for a simple and easy installation.

**Perimeter Kit, (HD) Includes:**

Front, back, side panels and hardware.

**Tools needed:**

1. Wrench
2. Cordless drill with Phillip bit end attached
3. Hardware included with kit (Screws, Nuts & Bolts)

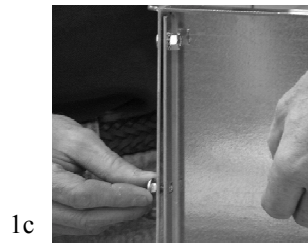
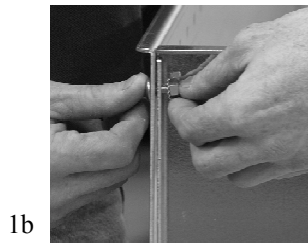
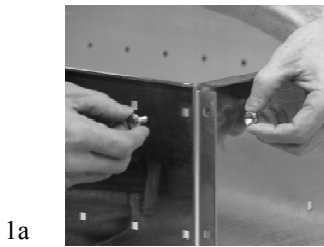
\*\*\*\*\*

**Follow the steps to assure secure assembly. (Note: Assembly works best if done inside the pan itself.)**

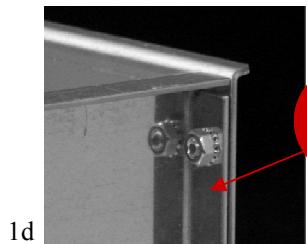
**Step #1**

Locate the Front/Back and Side Panels. Loosely bolt together (1) Side to (1) Front/Back Panel then continue assembling the other Side and Front/Back panels. (See Figures 1a-1c)

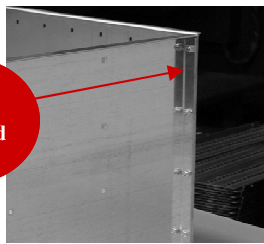
1. Identify panels and correct ends to be connected
2. Install all panels



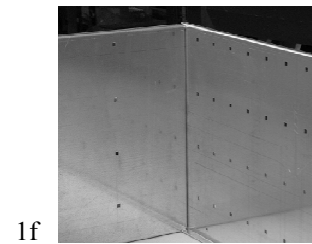
(Note: The side panels need to be assembled with flanges facing outward. See Figures 1d-1f.)



Flanges  
Outward



(Outside Perimeter Kit Wall)



(Inside Perimeter Kit Wall)

**Step #2**

Make sure the perimeter kit is flush with the wall and floor of the pan then fully tighten all nuts and bolts. Finish the installation by fastening the panels into the pan floor using the 8x1/2 Tek screws provided.

(Note: We highly recommend that you secure the kit to your pan with the hardware provided.)